

## Editorial

All focus in the Dynamics community is currently on Dynamics AX 2012, and also so within Dynaway! Both **Dynaway BLUE** and **Dynaway EAM** are now ready for AX 2012.

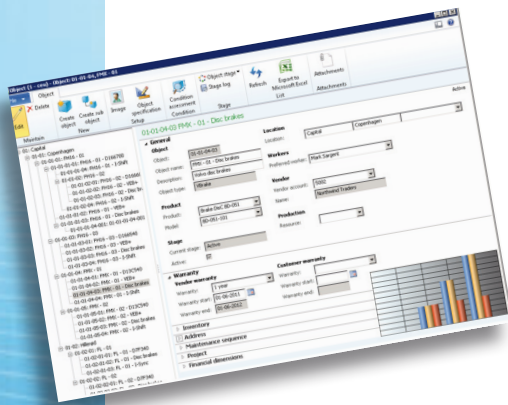
With Dynamics AX 2012 Microsoft take aim at much larger organizations. Within manufacturing this will drive greater demand for advanced manufacturing execution systems and also for advanced enterprise asset management. With **Dynaway BLUE** and **Dynaway EAM** we feel confident we can fulfill this demand, and help position Dynamics AX 2012 as a highly competitive alternative to SAP, Oracle and other high-end ERP systems!

Larger customers request larger suppliers! At Dynaway we now have a new owner – EG A/S. EG A/S have bought and merged two of the largest Dynamics AX partners in Denmark and thereby created one of largest Dynamics AX partners in the world. Read more about this change at: [www.dynaway.com/blog.html](http://www.dynaway.com/blog.html).

Best regards,  
 Morten Bach Møller, CEO Dynaway



## Dynaway EAM - the best release ever!



The **Dynaway EAM** release for Dynamics AX 2012 is *not* just a simple 1:1 upgrade of the version for Dynamics AX 2009. It is a *complete rewrite* of the entire module where we have taken the time necessary to clean out, simplify and restructure where possible. And we are confident we have produced the best **Dynaway EAM** release ever!

In particular the financial tracking of asset costs has been greatly enhanced. As an example it is now possible to separate asset maintenance costs from asset investment costs. Also the contracts related to external asset service management have been completely reworked and now allow much more flexibility and easier maintainability.

We intend to keep up the speed on **Dynaway EAM** with three planned releases in 2012, all with a continued focus on usability and readiness for larger enterprises.

## Overall Equipment Effectiveness (OEE) with Dynaway BLUE

We are currently receiving a lot of requests for additional functionality supporting *Overall Equipment Efficiency* on the factory floor.



Currently **Dynaway BLUE** estimates downtime based on job registrations, which clearly is sub-optimal. A more direct approach is to allow machine down-time registrations and down-time causes to be made directly in **Dynaway BLUE**.

In collaboration with several existing **Dynaway BLUE** customers we are currently implementing this extended functionality, to allow registration of for instance "The Six Big Losses" in **Dynaway BLUE**, and we will post an update on our web-site when this work is completed.

## Going BLUE...

### Güdel selects Dynaway BLUE

The foundation of the company's development is engineering, in conjunction with the manufacturing of linear and drive components.

To date, more than 10,000 units are in service world-wide in a highly diverse range of applications.



### Premier Is selects Dynaway BLUE

Since 1933 Premier Is have produced and delivered ice-cream to the Danish consumers.

So Premier Is knows the ice-cream habits of the Danes better than anyone. Premier Is manufactures more than 300 different types of ice-cream.



### Sanistål selects Dynaway BLUE

Sanistål is Denmark's leading wholesaler to Danish industrial and handicraft companies within tools, machinery, technical products, Carl F fittings, electrical products, service vehicle interior, HVAC, water & drainage as well as steel and metals.



## 2 x Certified for Dynamics AX

Dynaway BLUE and Dynaway EAM are both "Certified for Microsoft Dynamics AX".



What does this mean:

- Customer Evidence.** CfMD solutions must have a certain amount of customer evidence.
- Documentation.** CfMD solutions are required to be well documented.
- Technical standards.** CfMD solutions are required to meet high technical standards set by Microsoft.

### SIKA selects Dynaway BLUE

SIKA Footwear A/S is a family-owned, Danish company with more than 100 years of tradition, know-how and experience that develops and manufactures working and safety footwear.



### Minefinders selects Dynaway EAM

Minefinders headquartered in Vancouver, Canada operates the multi-million ounce Dolores gold and silver mine in northern Mexico.

The Company's objective is to build a profitable mining company dedicated to environmentally and socially responsible gold and silver production.



### Techo Bloc selects Dynaway EAM

Techo-Bloc is North America's premier manufacturer of landscape and masonry paving stones. As a world leader in product innovation, Techo-Bloc offers pavers, edges, carved images, masonry veneer, paving slabs, and walls designed to give homeowners and professionals the ultimate in design flexibility.

