



## White Paper

# Blue Production Bundling for Microsoft Dynamics® AX 2012

© 2012 Dynamway A/S

**© 2012 Dynaway A/S**

All rights reserved. No parts of this work may be reproduced in any form or by any means - graphic, electronic, or mechanical, including photocopying, recording, taping, or information storage and retrieval systems - without the written permission of the publisher.

Products that are referred to in this document may be either trademarks and/or registered trademarks of the respective owners. The publisher and the author make no claim to these trademarks.

While every precaution has been taken in the preparation of this document, the publisher and the author assume no responsibility for errors or omissions, or for damages resulting from the use of information contained in this document, or from the use of programs and source code that may accompany it.

In no event shall the publisher and the author be liable for any loss of profit or any other commercial damage caused or alleged to have been caused directly or indirectly by this document.

Published: January 2012.

---

# Table of Contents

<b>Part I Introduction</b>	<b>4</b>
<b>Part II Production Bundling</b>	<b>5</b>
<b>Part III Requirements and Setup</b>	<b>7</b>
<b>Index</b>	<b>8</b>

# 1 Introduction

Dynaway Blue is a module-based application, designed to be used primarily in a production environment. Dynaway Blue integrates with Microsoft Dynamics® AX (Dynamics AX), continuously updating data to, for example, the **Production control**, **Project management and accounting**, and **Human resources** modules.

Dynaway Blue is designed to be used together with input devices that are often used on a shop floor, for example, touch screens, barcode scanners, and RFID tags.

Workers can use Dynaway Blue to make time and attendance registrations on various jobs and report feedback on production jobs regarding number of items produced and the corresponding item consumption.

Dynaway Blue comprises a client (touch screen) located on the shop floor, which is used by workers to make job registrations. A Dynaway Blue module in Dynamics AX allows administrators and supervisors to set up parameters and base data as well as manage registrations made by workers on the Blue clients.

Several modules are available for a Dynaway Blue client, for example, **Registration**, Overall Equipment Effectiveness (**OEE**), and Quality Control (**QC**). Production bundling functionality is part of the **Registration** module.

## 2 Production Bundling

In Dynaway Blue, you can create production bundles containing a number of production jobs. The production bundle is shown as one registration line in the **Registration** module on the Blue client.

The advantage of production bundles on a Blue client is that workers only need to make registrations on one job, as opposed to several production job registration lines if the jobs were not bundled.

The production jobs included in a production bundle may relate to different production orders and resources (work centers). In figure 1, a section of the Job Queue screen in the **Registration** module is displayed. The production bundle is selected in the **Job Type** section, and in the **Details** section, the related operations / jobs are shown. If you select a production bundle in the **Job Type** section and click the **Route** button, the production bundle route is shown.

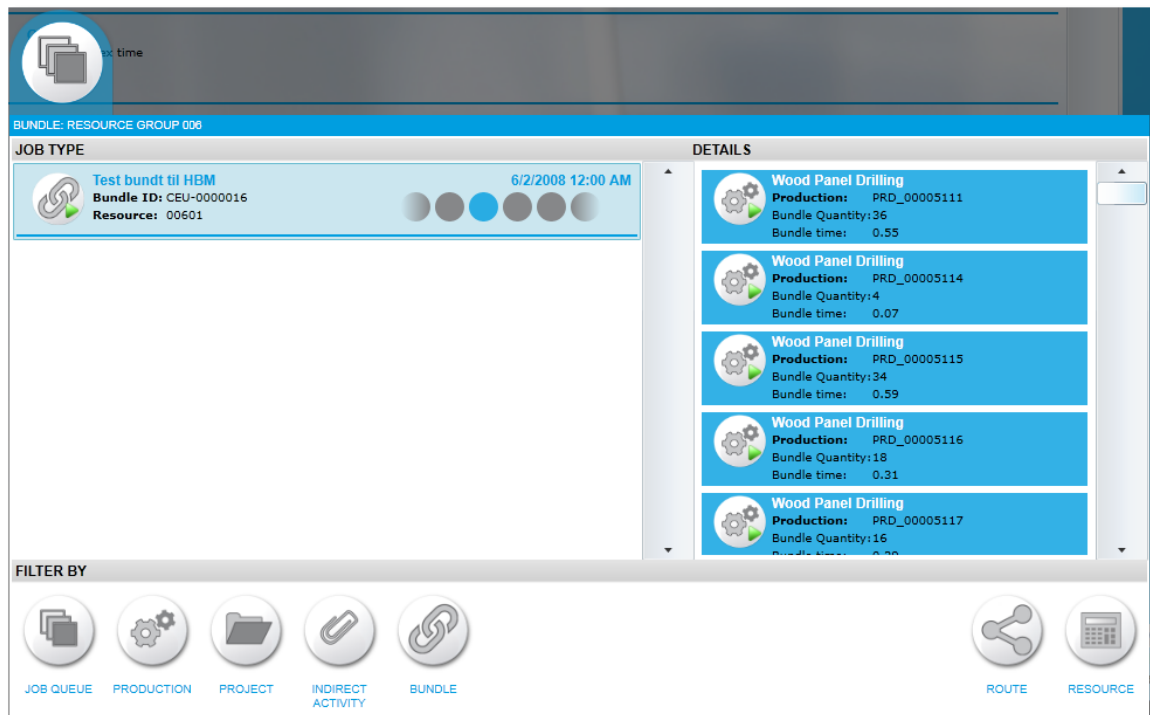


Figure 1

Production bundles are created in **Dynamics AX > Dynaway Blue**. When the production bundles have been created and released, they are visible in the **Registration** module on the Blue client, and workers can make registrations on the production bundle and the related production jobs.

A production bundle contains three levels of production information, arranged in a hierarchy:

- ❖ A **production bundle** consists of a number of bundle jobs.
- ❖ One **bundle job** represents a resource (work center).
- ❖ A number of **production jobs** is connected to each bundle job.

## Example 1

Here is an example from a customer showing you how job registrations can be minimized using production bundling functionality on Dynaway Blue:

- ❖ A shoe manufacturer produces 240 pairs of shoes per batch = 1 pallet containing 120 shoe boxes.
- ❖ The shoes are all of the same model and color but different in sizes. On average, a pallet of shoe boxes relate to 12 production orders = 12 different shoe sizes.
- ❖ Typically, the production of one pair of shoes requires processing on a number of resources, for example, 10 operations = 10 resources.
- ❖ 12 production orders processed on 10 resources equal 120 registration lines on the Blue client, meaning 120 start/stop registrations in the **Registration** module on a Blue client.
- ❖ The 12 production orders can be piled into one production bundle. This means that instead of 120 registration lines, the workers are presented with one registration line on the Blue client, and to complete the job, they have to make 10 start/stop registrations instead of 120 start/stop registrations.

## Example 2

Figure 2 shows a graphic example of a small production bundle, the required resources (work centers), and the related production jobs.

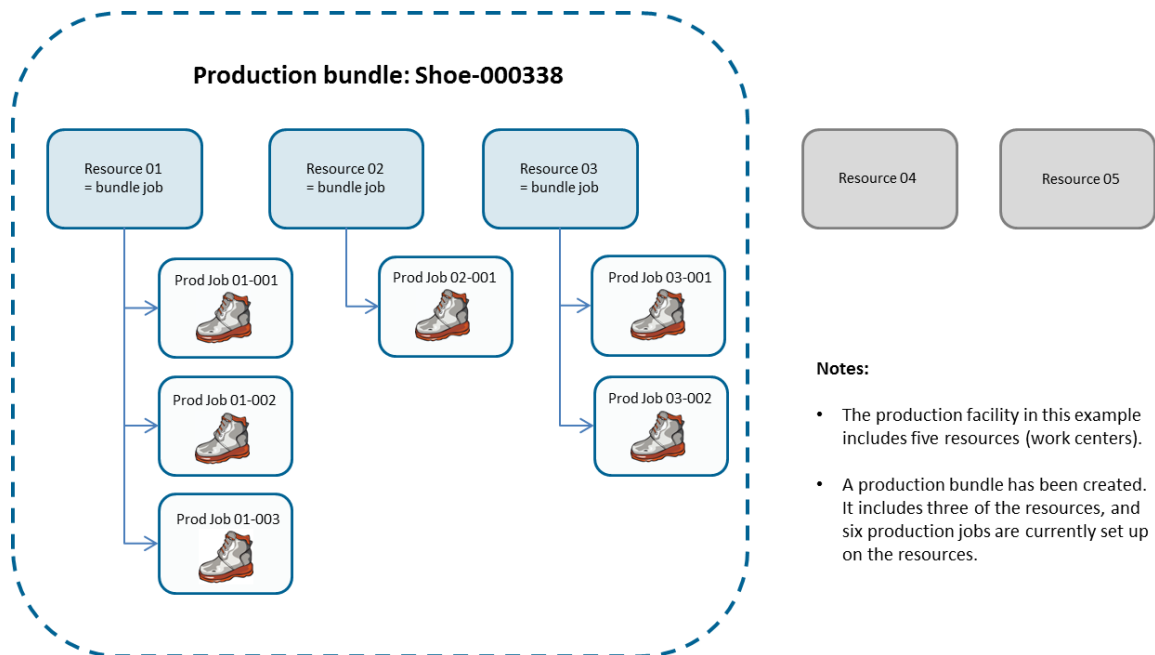


Figure 2

### 3 Requirements and Setup

Setting up production bundles for registration on Blue clients requires a few steps in **Dynamics AX > Dynaway Blue**.

#### Bundle types

In Dynamics AX, you can create bundle types and use them to group or filter production bundles. For example, a company producing parts in aluminum may want to divide bundle types into different aluminum types, or a tool manufacturer may want to create bundle types for various types of tools.

#### Creating a production bundle

In Dynamics AX, you create a production bundle in three steps. First you create the production bundle. Next step is to select the production orders to be included in the bundle. The related resources (work centers) are added to the production bundle, and you are able to see a list of the production jobs set up on each resource.

When you set the status of a production bundle to "Released", workers on the shop floor are able to make registrations on the production bundle in the **Registration** module on the Blue client. In figure 3 you will see an example of a production bundle setup in **Dynamics AX > Dynaway Blue > Periodic > Production bundle**.

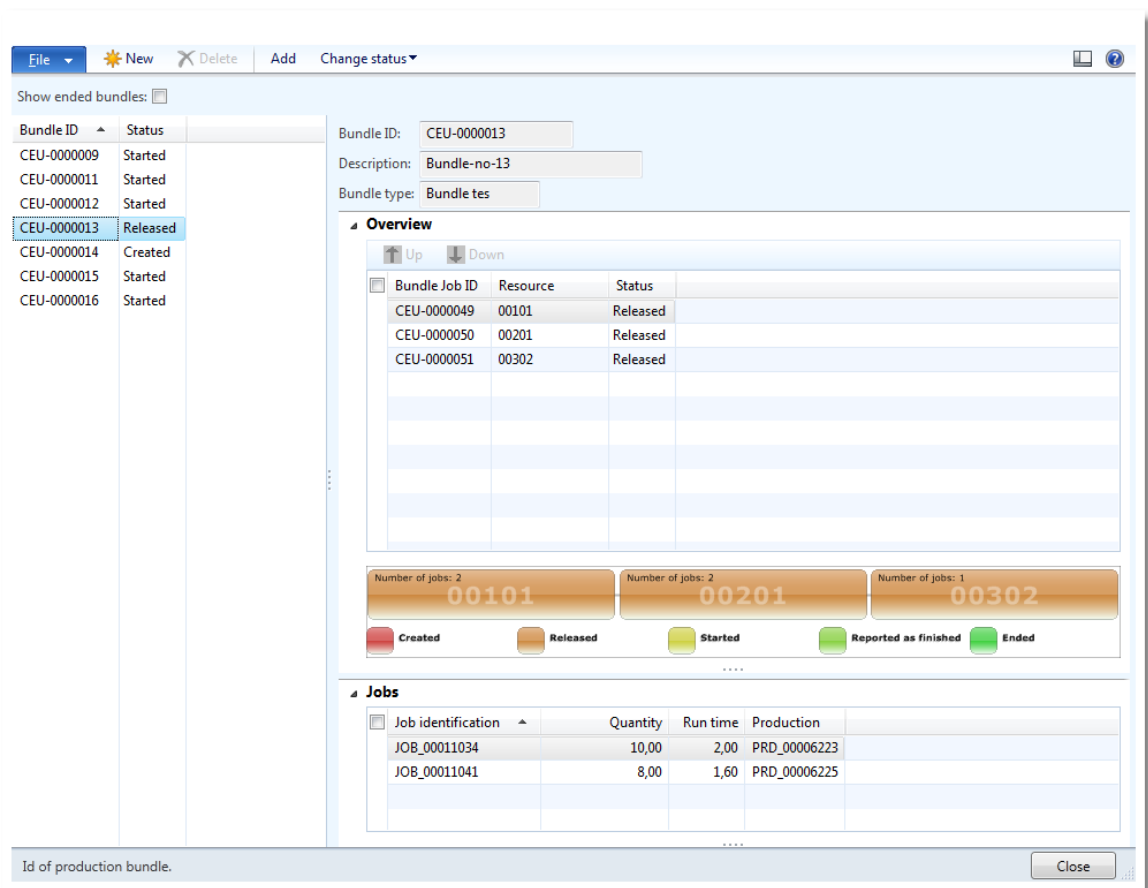


Figure 3

#### Note

If production jobs in a production bundle have documents attached, for example, safety instructions, they can be displayed on the Blue client using the **Documents** module.

# Index

## - B -

Blue module 4  
bundle job 5  
bundle types 7

## - C -

create a production bundle 7

## - E -

Example 5

## - I -

input devices 4  
Introduction 4

## - P -

production bundle 5  
production jobs 4, 5  
production orders 5

## - R -

Released production bundle 7  
resources 5

## - S -

Set up a production bundle 7  
Start/stop registrations 6

## - W -

work center 5  
work centers 5, 6